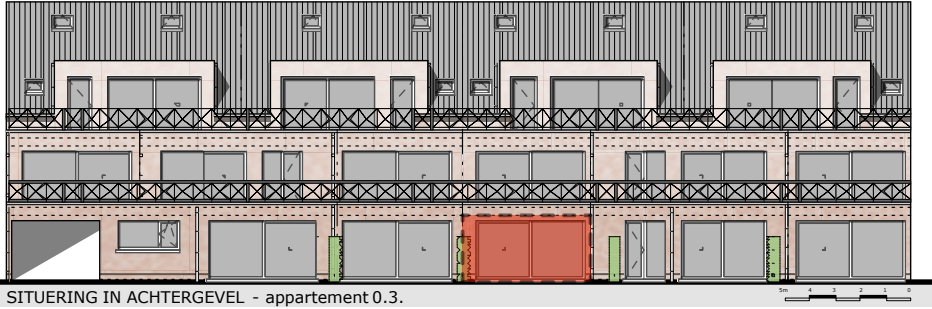
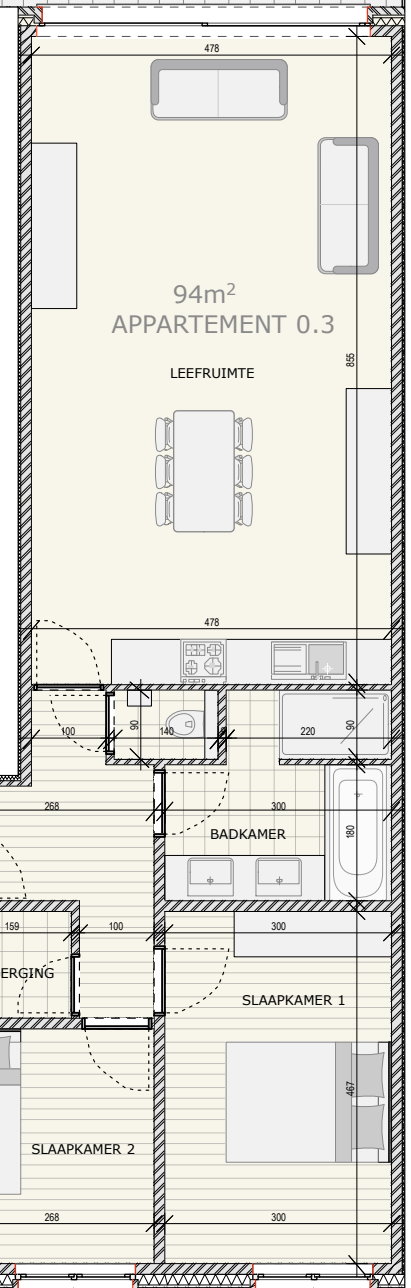
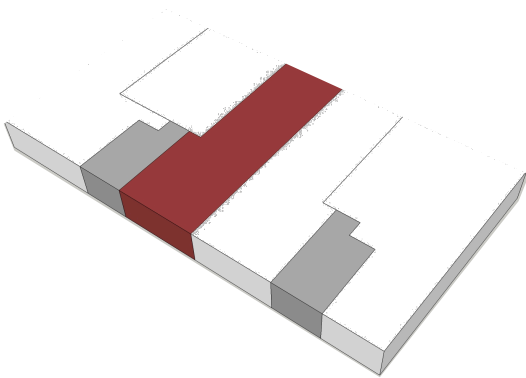
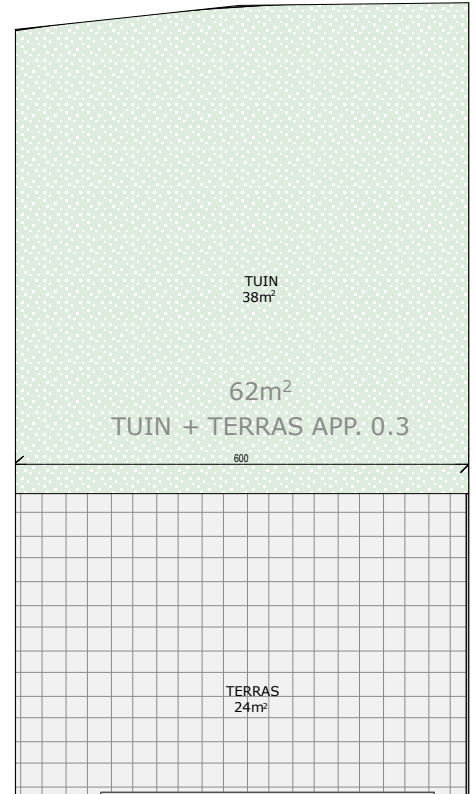


SITUERING IN VOORGEVEL - appartement 0.3.



SITUERING IN ACHTERGEVEL - appartement 0.3.



RESIDENTIE MAELSTEDE

adres: Kalmthoutsesteenweg 348 & 388
2920 Kalmthout

bouwheer: UP-Construct bvba
Korhoenlei 12, 2950 Kapellen

architect: KOON architectuur
Putsesteenweg 27, 2920 Kalmthout

Appartement 0.3.

verdieping: gelijkvloers

totale oppervlakte: 94m²

oppervlakte leefruimte: 46m²

oppervlakte overige ruimten: 48m²

oppervlakte tuin en terras: 62m²

0 1 2 3 4 5m

